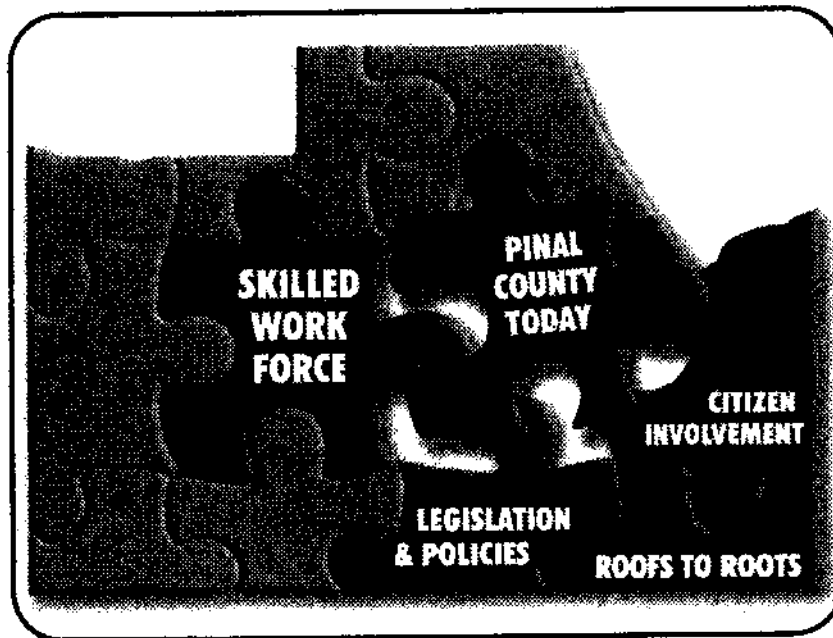


18th Annual PINAL COUNTY TOWN HALL



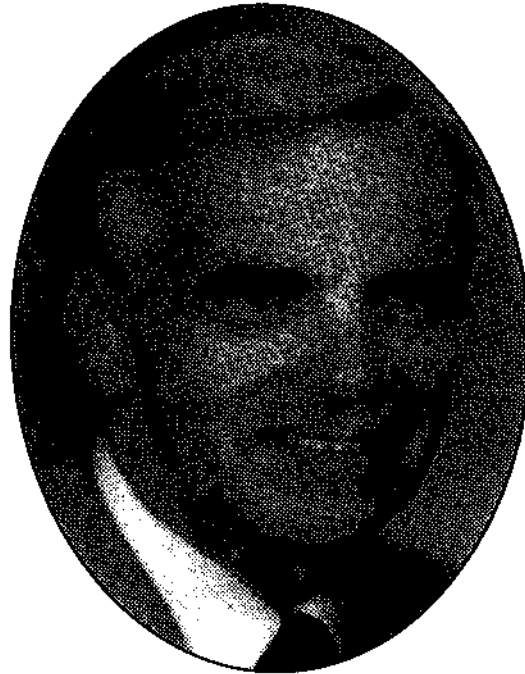
**"The Economic Puzzle,
How To Put It Together"**

2005 OFFICIAL REPORT

April 27-29, 2005

Casa Grande Holiday Inn

Dedication



Our 2005 Pinal County Town Hall Report is dedicated to Wayne G. Gerken. Wayne served as the inspiration and guide for Town Hall for the eighteen years.

Despite illness, Wayne participated in the planning, organizing and implementation of the 2005 Town Hall.

Appreciation is also expressed to Wayne's wife, Pat, who performed a host of planning and clerical duties including registrations, support materials, awards procurement, bookkeeping and much more.

"True leaders are not those who strive to be first but those who are first to strive and who give their all for the success of the team. True leaders are first to see the need, envision the plan, and empower the team for action.

*By the strength of the leader's commitment,
the power of the team is unleashed."*

Summary Report

Summary Report of the 18th Annual Pinal County Town Hall

April 27 – 29, 2005

Town Hall Advocates Countywide Economic Development

Delegates to the 18th annual Pinal County Town Hall developed recommendations for enhancing and expanding countywide economic growth and stability. More than 130 attendees heard five economic development topics. Then, divided into subcommittees, the participants fashioned strategic recommendations. A "Consensus Team" summarized the recommendations before their presentation to the delegate assembly.

Among the recommendations were:

- Foster collaboration between all countywide economic development efforts. Request Central Arizona College to facilitate the collaboration.
- Encourage over sizing of infrastructure by state, county, municipalities, public/private providers for present/future needs (e.g. acquisition of rights-of-way).
- Increase dialogue between employers and schools focusing on "real world" skills, integration of work skills with academics, hands-on learning and work ethics.
- Encourage each Town Hall delegate to invite a student for a job shadowing experience during the next six months.
- Implement the "Work Keys" job skills assessment and program in all communities.
- Build countywide strategies to guide the use of state trust land in the county.
- Develop guidelines and models for preserving and celebrating the county's rich history and diversity.

The 2005 Constellation Awards, sponsored by Harrah's Ak-Chin Casino/Resort in partnership with Casa Grande Valley Newspapers, Inc. and the Town Hall presented three awards:

Business Development

The Greater Casa Grande Economic Development Foundation
Lori Gary, Executive Director

Non-profit Organization

Stanfield Associated Women Marva Naab

Volunteerism

Pan de Veda Mary Gloria, Queen Creek

During its closing session, delegates expressed strong concern over the state's cancellation of the Pinal/Gila Behavioral Health Association contract. This action, it was stated by several speakers, will impact the economy and delivery of quality services countywide. Jack Beveridge, CEO of the agency, expressed dismay over the way the decision was made to award the contract to an out of state for-profit entity. The decision is being appealed to the state.

The delegates asked the Town Hall Advisory Board to consider drafting a letter of concern to the state in reference to its action. In its meeting following adjournment of Town Hall, the Advisory Board elected to submit a letter "bringing this urgent concern to the attention" of the state.

About a two dozen delegates, at the request of the assembly, volunteered to form a study team, to formulate a plan by which Town Hall recommendations will be more efficiently and effectively implemented. The committee plan will be presented to the Town Hall Advisory Board in August.

Karl Peterson, advisor to the Town Hall Advisory Board stated: "This was a very proactive and productive session. Attendees evaluated the overall quality of the conference as 4.3 on a maximum quality scale of five. Especially gratifying was the number of first time attendees and student delegates. Each discussion group leader commented on the active, and insightful participation of the student representatives."

Discussion Group Reports

TPOIC: "Understanding Pinal County Today"

1. Foster collaboration between all countywide economic development efforts with existing/forming future public and private economic development entities. Request Central Arizona College to facilitate the collaboration.
2. Closing the gaps and accelerating infrastructure, land use-planning efforts by state, county, municipalities and public/private providers (e.g. acquisition of right-of-way). Create opportunities for public involvement in determining the county's future.
3. Seek infrastructure funding through partnerships (e.g. developer-driven, impact fees. Grants) and existing resources. Elected representatives need to take the lead in policy making; planning departments in implementation.
4. Encourage over sizing of infrastructure for present/future needs by state, county, municipalities, public/private providers (e.g. acquisition of rights-of-way).
5. Explore and build strategies what allows us to plan for growth effectively (water, power, education, and planning/zoning).
6. Build countywide strategies to influence how Pinal County state trust land is used.
7. Establish a countywide trade consortium with a similar community in an Asian community (e.g. China). Study the exchange of ESL teaching for the investment of Asian community in the business and industry of Pinal County.

TOPIC: "Providing A Skilled Workforce"

1. Provide a potential industry "package:

- Training, site selection; emphasize quality of life in the community;
- Utilize the CAC Small Business Development Center to coordinate;
- Provide Economics 101 (existing seminar) for councils, community leaders);
- Protect rail corridor;
- Complete CAAG/MAG study.

2. Increase partnering between schools and employers. Expand Career Technical Education (CTE) opportunities through our secondary schools, CAC, CAVIT, Tech Prep and other providers. Also pursue re-entry Career Technical Education avenues for displaced workers. Explore any disconnects between educational curricula and industry skill set needs.

- Teach "real world" skills;
- Internships;
- Job shadowing programs;
- Job training and retraining;
- Internships/apprenticeships with local business partners;
- Transportation to training opportunities.

3. Implement the "Work Keys" initiative. Encourage the governor to utilize Pinal County as a pilot site for the initiative.

- Inventory talent;
- Assess skills comprehensively;
- Market program to businesses;
- Establish task force to implement the initiative.

Topic: "Understanding/Influencing Legislation/Policies"

1. Seize opportunities to engage all media in influencing legislation and policies which affect Pinal County.
2. Plan a comprehensive/collaborative transportation policy to be adopted by all cities/communities/developers. Consider all roadway options (toll roads, light rail, car pooling, Arizona Ride Share).
3. Explore and build strategies which facilitate planning for growth effectively (water, power, education, zoning).
 - Show support for Morrison Study (seek partners to support it).
 - Build coalition of partners for MLD/Planning and Zoning
 - Place a county lobbyist in the legislature
 - Educate and inform the electorate on how to contact/influence legislators
 - Provide citizens with a calendar of legislative activities, deadlines and so on.
4. Build countywide strategies to impact decisions concerning allocation of state trust land in Pinal County. Monitor the effects of rapid growth (education, land use, public policy, work force development) and develop strategies that support our view of our county.

"The best communities are those in which each citizen knows what is going on, and takes responsibility for what happens."

"We cannot have healthy communities when everyone is preoccupied with narrow self-interest. We must recognize that we are part of something larger than ourselves."

- Bruce Adams - The Pauses Between the Notes

Partners in Economic Progress

Door Prizes

Appreciation is extended to the following organizations and individuals for providing this years delegate door prizes.

Abbott Laboratories, Ross Products Division

Goldfield Ghost Town

Holiday Inn Casa Grande

Gold Canyon Golf Resort

Harrah's Ak-Chin Casino Resort

the Dolly Steamboat

Cold Stone Creamery – Casa Grande

CORPORATE AND BUSINESS PARTNERS

MAJOR: Abbott Laboratories, Ross Products Division**
Arizona Public Service **
Casa Grande Regional Medical Center**
Comcast
El Dorado Holdings
Harrah's Ak-Chin Casino and Resort*
Lennar Homes
Pinal County Federal Credit Union
Rural Metro Fire Department
Sonoran Vista Partners, LLC
The Remington Group, Inc.

SUPPORTING: SunWest Educational Associates, Inc.**

SUSTAINING:

DBK, Inc.*
Fast Stop Convenience Stores **
First American Title Insurance Agency
Fitzgibbons's Law Office
Goldfield Ghost Town & Mine Tours, Inc.
Mining Camp Restaurant & Trading Post
San Tan Mountains PRIDE Association
Sharp's Welding
Shope's IGA*
Southwest Gas Corporation**
Summit Professional Leadership
Sunstate Bank**
the Dolly Steamboat*
TRICO Electric Cooperative, Inc.

"Excellence is the result of caring more than others think is wise, risking more than others think is safe, dreaming more than others think is practical, and expecting more than others think is possible."

Delegate Directory

DIRECTORY 2005

Anna Marie Aldrete
Contracts Director
Pinal County Health & Human Services
P.O. Box 868
Florence, AZ 85232
Phone: 520-866-7281
Fax: 520-866-6751
E-mail: anna.aldrete@co.pinal.az.us

Emily Verdugo-Aldrich
Council member
City of Coolidge
130 W. Central Ave.
Coolidge, AZ 85228
Phone: 520-723-5361
Fax: 520-723-7010

Adeline M. Allen
Housing Director
Pinal County
970 N. Eleven Mile Corner Rd
Casa Grande, AZ 85222
Phone: 520-866-7200
Fax: 520-866-7231
E-mail: adeline.allen@co.pinal.az.us

Kelly Anderson
Mayor
City of Maricopa
17380 W. Murphy
Maricopa, AZ 85239
Phone: 520-560-1500
Fax: 520-568-2288
E-mail: apfarms@cgmailbox.com

Roy Archer
District Manager
Southwest Gas Corporation
201 W 4th Street
Casa Grande, AZ 85222
Phone: 520-836-2266
Fax: 520-836-7836
E-mail: roy.archer@swgas.com

Alex Argueta
President
The Remington Group
1600 E. Hanley Blvd. #124
Tucson, AZ 85737
Phone: 520-219-1815
Fax: 520-219-1874
E-mail: alex14@mindspring.com

Cliff Axt
Chairman of the Board
A.J. Chamber of Commerce
5301 S. Superstition Mtn. Rd.
A-104 – PMB 4472
Gold Canyon, AZ 85218
Phone: 480-288-9555
Fax: 480-288-9556
E-mail: cdaxt@theaxtteam.com

Louis W. Babin
Planning & Zoning Commissioner
City of Apache Junction
P.O. Box 3192
Apache Junction, AZ 85219
Phone: 480-474-8146
Fax: 480-474-8146
E-mail: www.loubabin@netzero.com

Dena Baldwin
Developments Director
Pyramid Community Developers
6140 S. Kings Ranch Rd.
Gold Canyon, AZ 85206
Phone: 480-982-5707
Fax: 480-983-8501
E-mail: dena.Baldwin@mchso.com

Michael Barchilon
Student
Apache Junction High School
5772 East 1st Ave.
Apache Junction, AZ 85220
Phone: 480-983-7613

DIRECTORY 2005

Delia M. Carlyle
Vice Chairman
Ak-Chin Indian Community
42507 W. Peters & Nail Rd.
Maricopa, AZ 85239
Phone: 520-568-1009
Fax: 520-568-4556
E-mail: dcarlyle@ak-chin.non.us

Evelyn Casuga
Southwest Division Manager
Arizona Public Services
50 N. Brown – Mail Station 4536
Casa Grande, AZ 85222

Roy C. Chavez
Town Manager
Town of Superior
734 W. Main St.
Superior, AZ 85273
Phone: 520-689-5752
Fax: 520-689-5822
E-mail: townmanager@superior-arizona.com

Lindsie Clark
Student
Maricopa High School
16221 N. Warren Rd.
Maricopa AZ. 85239
Phone: 520-568-8136

Larry Cline, Ed.D
Dean of Academic Services
CAC – Superstition Mtn Campus
273 Old West Highway
Apache Junction, AZ 85219
Phone: 480-288-4002
Fax: 480-288-4058
E-mail: larry_cline@centralaz.edu

Neomi Costales
Executive Director
St. Vincent de Paul Society
405 E. 2nd St.
Casa Grande, AZ 85222
Phone: 520-836-2009
Fax: 520-876-0072
E-mail: stanthony-SVDP@cgmailboxocom

Bennett Curry*
Director
CAC Small Business Development Center
1015 E. Florence Blvd.
Casa Grande, AZ 85222
Phone: 520-426-4341
Fax: 520-876-5966
E-mail: bcurry@central.az.edu

Kari Deats
Student
Maricopa High School
49174 W. Mayer Blvd.
Maricopa, AZ 85239
Phone: 520-705-2508

Dolores Doolittle
Treasurer
Pinal County
P.O. Box 729
Florence, AZ 85232
Phone: 520-866-6434
Fax: 520-868-9007
E-mail: dodie.doolittle@co.pinal.az.us

Terry Doolittle
Deputy County Manager
Pinal County
P.O. Box 827
Florence, AZ 85232
Phone: 520-866-6248
Fax: 520-866-6006
E-mail: terry.doolittle@co.pinal.az.us

Jan Engan
Chief Operating Officer
Pinal/Gila Council for Senior Citizens
1895 N. Trezell Rd. Ste #2
Casa Grande, AZ 85222
Phone: 520-836-2758
Fax: 520-421-2033
E-mail: jane@pgcsc.org

Dolores Dodi Freeman
Branch Manager-Florence
Pinal County Federal Credit Union
P.O. Box 969
Florence, AZ 85232
Phone: 520-868-4881 x 11
Fax: 520-868-0142
E-mail: dfreeman@pinalcountyfcu.com

DIRECTORY 2005

Kathryn Hollenbeck
Superintendent
CAVIT
8470 N. Overfield Rd.
Coolidge, AZ 85228
Phone: 520-423-1944
Fax: 520-423-1822
E-mail: Kathryn_hollenback@centralaz.edu

Ron Hunkler*
Town of Town Queen
34317 Goldmine Gulch
Queen Creek, AZ 85242
Phone: 480-987-9871
Fax: 480-987-9871
E-mail: Hunkler@cableaz.com

Dr. Patrick Jeske*
Superintendent
Stanfield School District
515 S. Stanfield Rd.
Stanfield, AZ 85272
Phone: 520-424-3353
Fax: 520-424-3798
E-mail: pjeske@stanfield.k12.az.us

Frank Michael Jimenez
Instructor
Santa Cruz High School
900 N. Main Street
Eloy, AZ 85231
Phone: 520-466-2100 x268
Fax: 520-466-2222
E-mail: fmljimenez@yahoo.com

Christy Johnson
Executive Director
Community Alliance Against Family Abuse
P.O. Box 3778
Apache Junction, AZ 85217
Phone: 480-982-0205
Fax: 480-982-0258
E-mail: ChristyJ@caafaaz.org

Whitney Johnson
Student
Casa Grande Union High School
1613 E. Daisy St.
Casa Grande, AZ 85222
Phone: 520-705-2001
Fax: 520-316-3353
E-mail: Whitsney0303@hotmail.com

Ari Kalan
Student
Apache Junction High School
1025 N. Mountain View Rd.
Apache Junction, AZ 85219
Phone: 480-982-7434

Denise Keller*
County Librarian
Pinal County Library District
P.O. Box 2974
Florence, AZ 85232
Phone: 520-866-6457
Fax: 520-866-6533
E-mail: denise.keller@co.pinal.az.us

Kathleen Kennedy
Career Transition Specialist
Fred G. Acosta Job Corps. Center
901 S. Campbell Ave.
Tucson, AZ 85719
Phone: 520-879-9186
Fax: 520-879-9135
E-mail: kennedy.kathleen@jobcorps.org

Sylvia Kerlock
Town Clerk
Town of Winkelman
P.O. Box 386 – 206 Giffin Ave.
Winkelman, AZ 85292
Phone: 520-356-7854
Fax: 520-356-7709
E-mail: skerlock@townofwinkelman.com

Vicki Kilvinger
Council member
Town of Florence
775 N. Main St.
Florence, AS 85232
Phone: 520-868-7552
Fax: 520-868-7564

DIRECTORY 2005

Judy Lopez
Council member
City of Coolidge
130 W. Central Ave.
Coolidge, AZ 85228
Phone: 520-723-5361
Fax: 520-723-7910

Bill Ludeke
Executive Director
United Way of Pinal County
P.O. Box 10541
Casa Grande, AZ 85230-0541
Phone: 520-836-0736
Fax: 520-836-0737
E-mail: bill@unitedwayofpc.org

Angelita Lujan
Student
Casa Grande Union High School
1102 E. Laurel Drive
Casa Grande, AZ 85222
Phone: 520-421-2706
E-mail: goffygurly_333@yahoo.com

Laura Dean-Lytle
Recorder
Pinal County Government
P.O. 848
Florence, AZ 85232
Phone: 520-866-7121
Fax: 520-866-7170
E-mail: Laur.Dean-Lytle@pinal.az.us

William Marshall
Area Supervisor
Arizona Public Service
P.O. Box 2600
Globe, AZ 85502
Phone: 928-425-8031
Fax: 928-425-8024
E-mail: William.Marshall@APS.com

James McFellin
City Manager
City of Eloy
628 N. Main St.
Eloy, AZ 85231
Phone: 520-466-9201
Fax: 520-466-3161
E-mail: Jmcfellin@ci.elay.az.us

Cherie McGlynn
Trustee
Casa Grande Regional Medical Center
1800 E. Florence Blvd.
Casa Grande, AZ 85222
Phone: 520-836-5352
Fax: 520-836-5352
E-mail: cmcglynn@cgmailbox.com

Charles McHugh*
Advisory Committee Member
Pinal County Town Hall
839 W. Pima
Coolidge, AZ 85228
Phone: 520-723-3632
Fax: 520-723-5801

Naomi Miguel
Student
Casa Grande Union High School
Rt. 2 Box 612-A
Casa Grande, AZ 85222
Phone: 520-361-2527

Connie Mitchell
Guidance Counselor
Coolidge Schools
800 W. Northern Ave.
Coolidge, AZ 85228
Phone: 520-836-5812/723-2320

Gene Moffett
Advisory Board Member
Desert Pavilion
2143 N. Pebble Beach Dr.
Casa Grande, AZ 85222
Phone: 520-421-9431

Oscar R. Montano
Community Development Planner
Central Arizona Association of Government
271 Main Street
Superior, AZ 85273
Phone: 520-689-5004 ext. 25
Fax: 520-689-5020
E-mail: omontano@cassgcentral.org

DIRECTORY 2005

Brittany Podolak
Student
Casa Grande Union High School
719 E. Brenda Dr.
Casa Grande, AZ 85222
Phone: 520-421-1461
Fax: 520-836-8500
E-mail: Brittany_Lace@hotmail.com

Dick Powell
Council Member
City of Casa Grande
510 E. Florence Blvd.
Casa Grande, AZ 85222
Phone: 520-836-7013
Fax: 520-421-8602

Paul Prechel
Council member
City of Coolidge
130 W. Central
Coolidge, AZ 85228
Phone: 520-723-5361
Fax: 520-723-7910

Tom Rankin
Mayor
Town of Florence
775 N. Main Sts.
Florence, AZ 85232
Phone: 520-868-7552
Fax: 520-868-7564

T. J. Ratliff
Program Manager-Student Services
CAC – Aravaipa Campus
80440 E. Aravaipa Rd.
Winkelman, AZ 85292
Phone: 520-357-2003
Fax: 520-357-2019
E-mail: jim_ratliff@centralaz.edu

Jerry Ravert
President
SMOR Chamber of Commerce
P.O. Box 416
San Manuel, AZ 85631
Phone: 520-896-2425

Craig Ringer
Deputy Director
Central Arizona Association of Government
271 Main St.
Superior, AZ 85273
Phone: 520-689-5004
Fax: 520-689-5020
E-mail: cringer@caagcentral.org

Rebecca Robinson
Business Development Representative
Greater C.G. Valley Econ. Dev. Foun.
201 E. 3rd St.
Casa Grande, AZ 85222
Phone: 520-836-6868 Fax: 520-836-4898 E-mail:
casagrnd@cybertrails.com

Janeen Rohovit
Public Involvement Representative
Salt River Project
P.O. Box 52025
Phoenix, AZ 85072
Phone: 602-236-2679
Fax: 602-236-2003
E-mail: jcrohovi@srpnet.com

Emilio Romero
Student
Casa Grande Union High School
1678 E. Melissa St.
Casa Grande, AZ 85222
Phone: 520-0057
Fax: 520-316-3353

Kristi Youtsey Ruiz
Clerk of the Superior Court
Pinal County
P.O. Box 424
Florence, AZ 85232
Phone: 520-866-5381

Lionel D. Ruiz
District 1 Supervisor
Pinal County
P.O. Box 827
Florence, AZ 85232
Phone: 520-866-7830
Fax: 520-866-7838
E-mail: lionel.ruiz@co.pinal.az.us

DIRECTORY 2005

Vern Stover*
President
Fast Stop Convenience Stores
P.O. Box 558
San Manuel, AZ 85631
Phone: 928-812-2833
Fax: 520-385-4846
E-mail: vernsr@faststopaz.com

Jim Stuckey
Dean of Community Outreach
Central Arizona College
3270 S. Goldfield Rd. #107
Apache Junction, AZ 85218
Phone: 480-229-4081
E-mail: jstuckey@centralaz.edu

Cortney Talley
Student
Maricopa High School
49661 W. Mockingbird Ln.
Maricopa, Az 85239
Phone: 520-568-3918

Vito Tedeschi
Finance Director
City of Eloy
624 N. Main St.
Eloy, AZ 85231
Phone: 520-464-3425
Fax: 520-466-3760
E-mail: vtedeschi@cl.elayu.az.us

Terry Thomas
Student
Santa Cruz Valley Union High School
220 W. Cholla Street
Casa Grande, AZ 85222
Phone: 520-836-5700

Jack Toohey
Teacher
Maricopa Unified School District
8865 S. 48th St. Unit 2
Phoenix, AZ 85044
Phone: 520-568-8136

Chris Vasquez
Chief Deputy
Pinal County Sheriff's Office
P.O. Box 867
Florence, AZ 85232
Phone: 520-866-5133
Fax: 520-866-5195
E-mail: Chris.Vasquez@co.pinal.az.us

Mary Aguirre-Vogler
Pinal County Commissioner
Pinal County
P.O. Box 1024
Red Rock, AZ 85245
Phone: 520-251-1658
E-mail: magurrevogler@aol.com

Dave Waldron
Council Member
City of Apache Junction
300 E. Superstition Blvd.
Apache Junction, AZ 85219
Phone: 480-250-0944
Fax: 480-671-4541
E-mail: daveAaj@quixnet.net

Gene Walker
I.T. Director
Pinal County Government
P.O. Box 726
Florence, AZ 85232
Phone: 520-866-6648
Fax: 520-866-6662

Joan Warren
Dean of Workforce & Aravaipa
Central Arizona College
8470 N. Overfield Rd.
Coolidge, AZ 85228
Phone: 520-876-1026
Fax: 520-426-4271
E-mail: joan_warren@centralaz.edu

Pete Weaver
Emergency Services
Pinal County Public Works
P.O. Box 727
Florence, AZ 85232
Phone: 520-866-6411
Fax: 520-866-6411
E-mail: trisha.mudd@co.pinal.az.us

Special Acknowledgements

The Pinal County Town Hall Advisory Committee expresses special appreciation to all individuals who helped in the planning and implementation of this Town Hall. Appreciation is also extended to all speakers, facilitators, recorders and participants.

2005 Pinal County Town Hall Advisory Committee

Ms. Mary L. Brooks.....	Arizona City
Ms. Cindi Busboom.....	Apache Junction
Mr. Davy Crockett.....	Casa Grande
Mr. Karl Foster.....	Mammoth
Ms. Lacy Gамbee.....	Hayden
Mr. Ron Hunkler.....	Queen Creek
Dr. Patrick Jeske.....	Stanfield
Ms. Denise Keller.....	Florence
Ms. Maxine Leather.....	Superior
Mr. Robert Lee.....	San Manuel
Mr. Charles P. McHugh.....	Coolidge
Ms. Joan Perry.....	San Tan Area
Mr. Vern Stover.....	Florence Junction

Members At Large

Dr. Stan Griffis, Pinal County Government

Ms. Sandie Smith, Pinal County Board of Supervisors

Mr. Bennett Curry, Central Arizona College

Facilitator

Mr. Wayne G. Gerken
SunWest Educational Associates, Inc.

Advisor

Mr. Karl S. Peterson
Summit Professional Leadership